

Cloud Interoperability Project (CIP)

Version 2.0

Focusing on PLM



Connecting Clouds

Contents

- **Important Topics of the future (Part I)**

- Networking
- Process Management
- Services
- Flexible Work
- Technology and Innovation

- **CIP Structure (Part II)**

- Organization Diagram
- Cloud Interoperability
- Migration and Interoperability
- CIP Architecture
- Projects

- **Roadmap 2017 (Part III)**

- **Business and Conclusion**

Important Topics of the future (Part I)

- **Networking**

Keep Balance between Stability and Change

- **Process Management**

From Functional View to Process Orientation

- **Services**

Product Enhancement through new Services

- **Flexible Work**

Work where and when you want to work

- **Technology und Innovation**

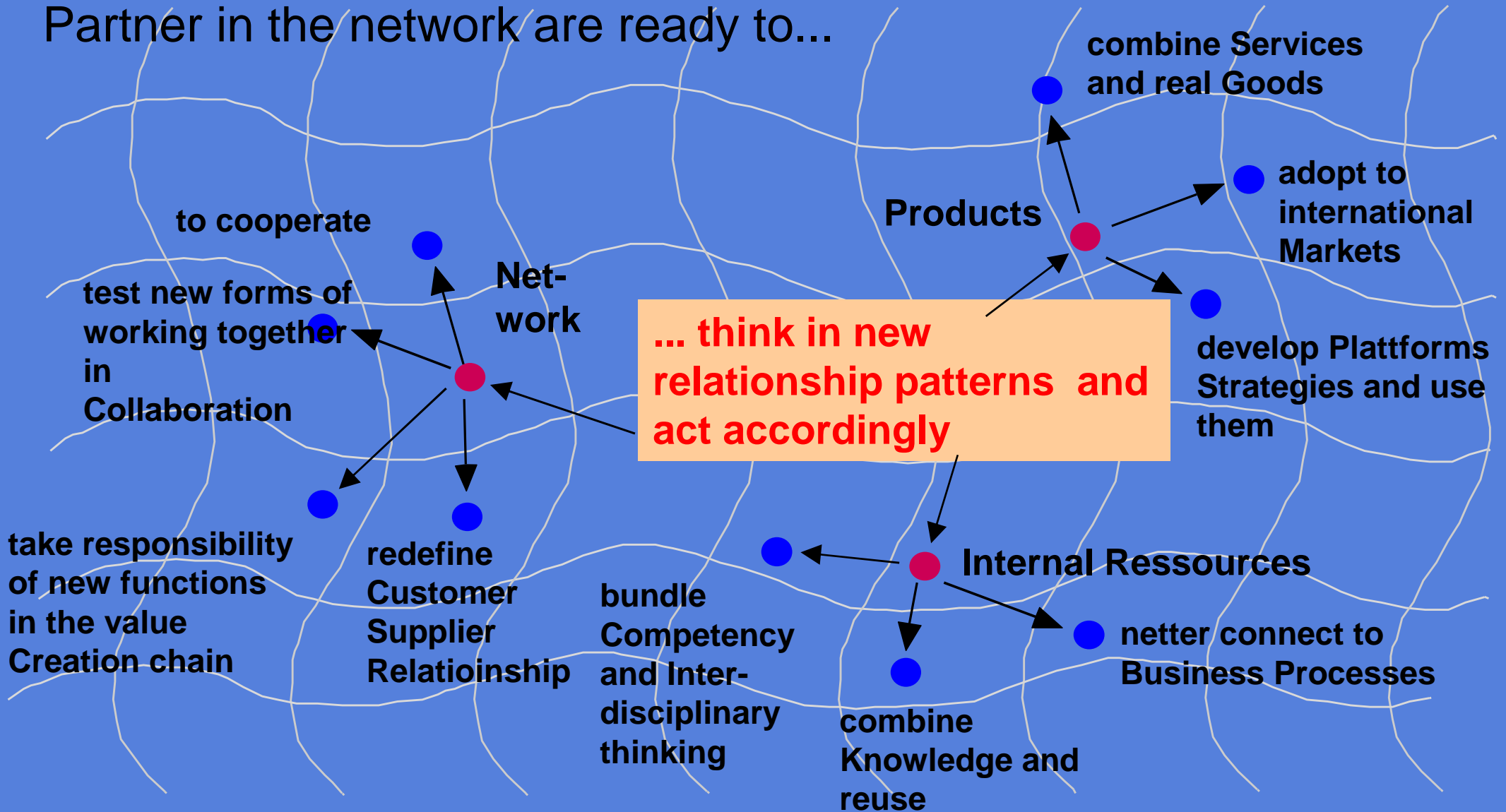
Realize the Potential of new Technologies,

Adopt the Use of new Technologies and systematical Innovation

- Networking
 - Networks of Competency
 - Worldwide Networking

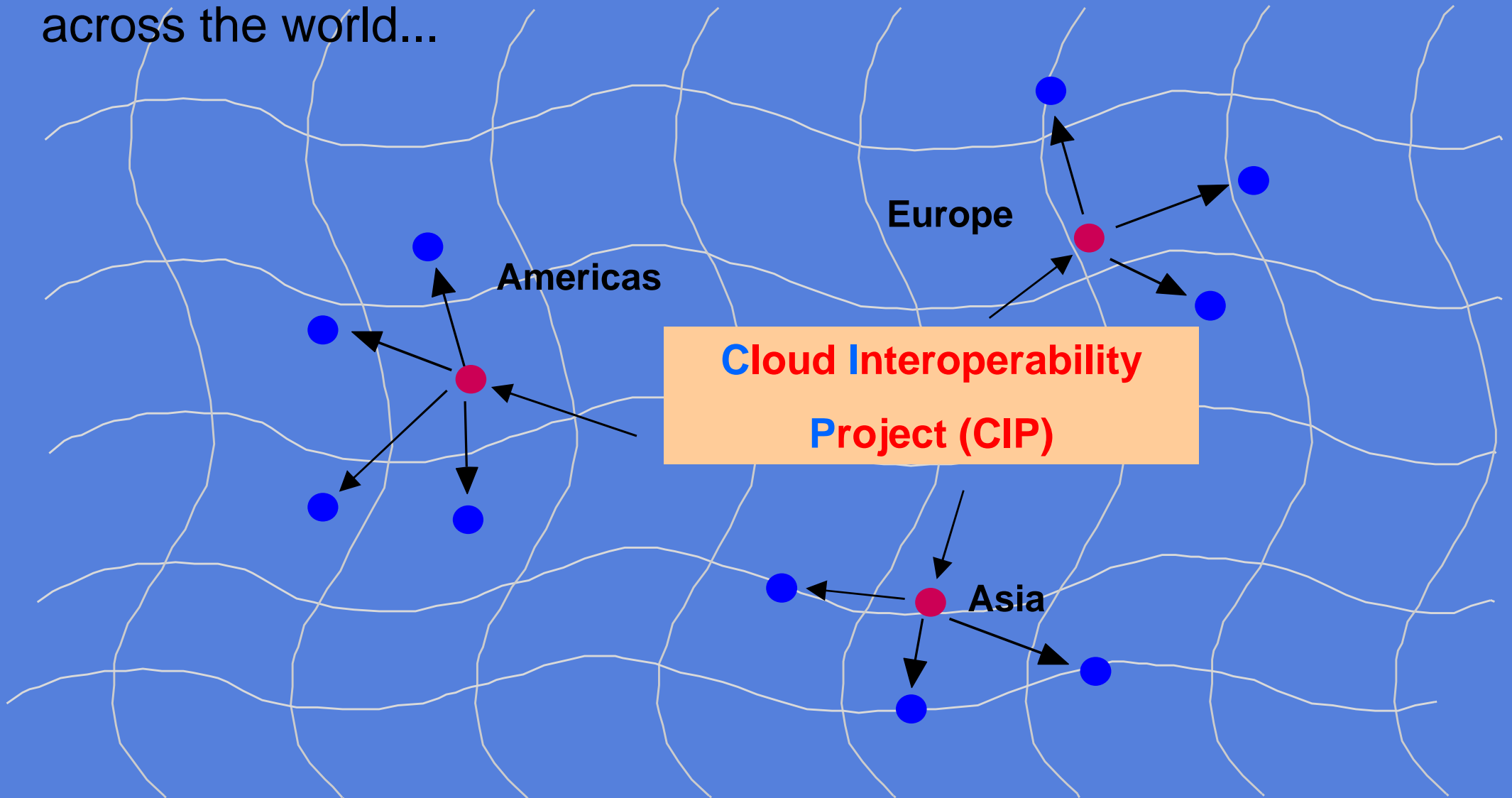
Built Networks of Competency

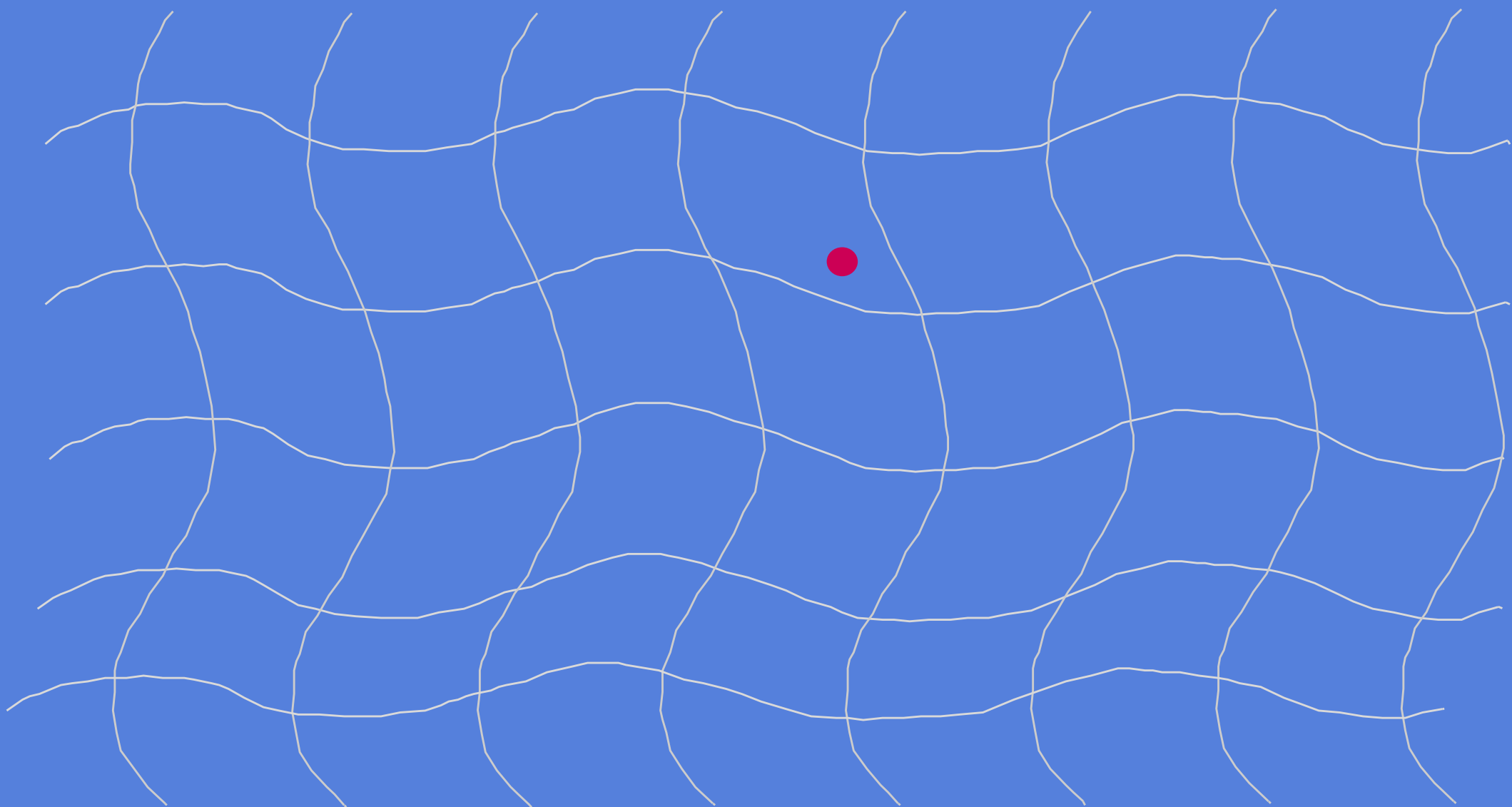
Partner in the network are ready to...

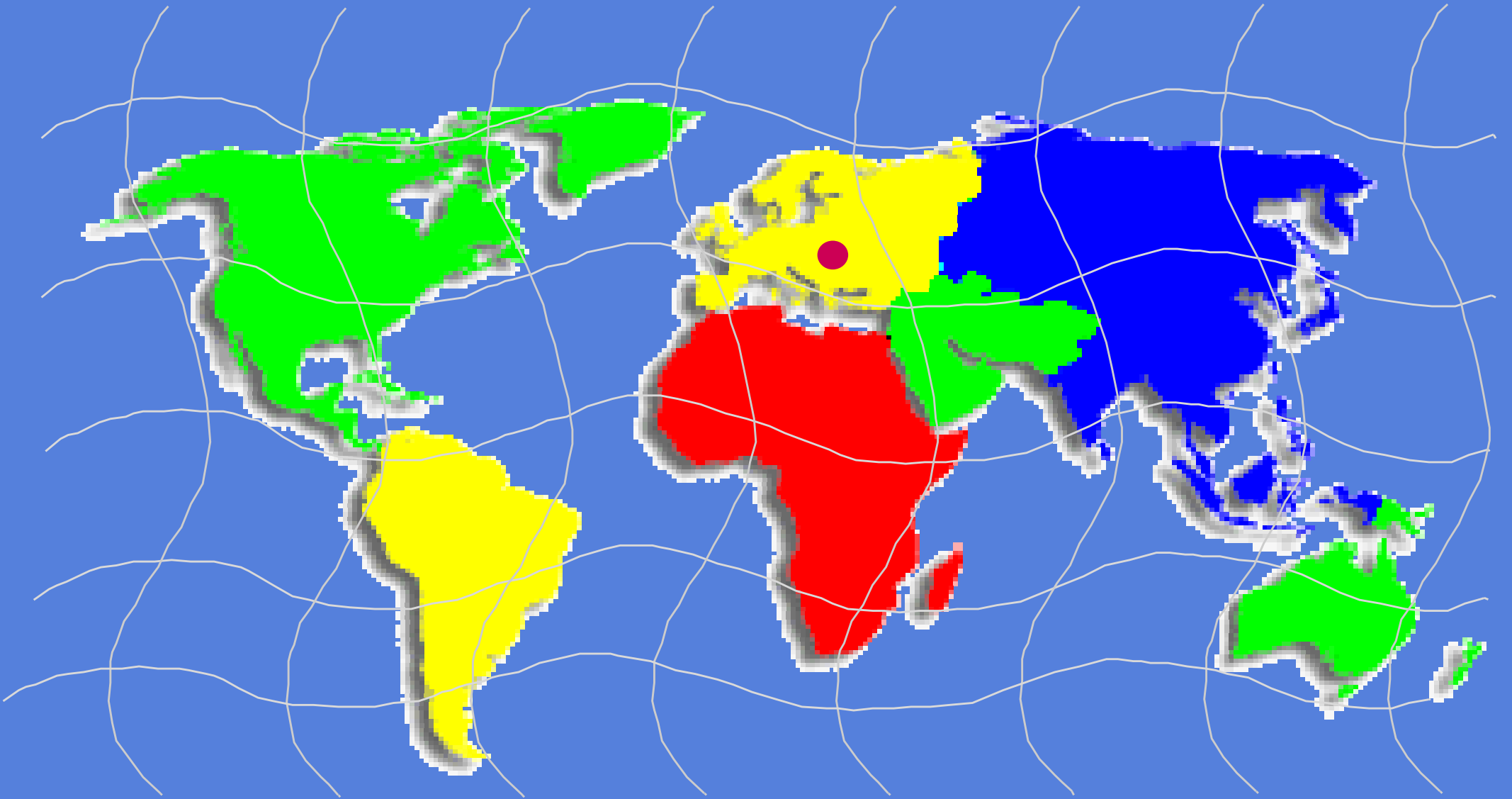


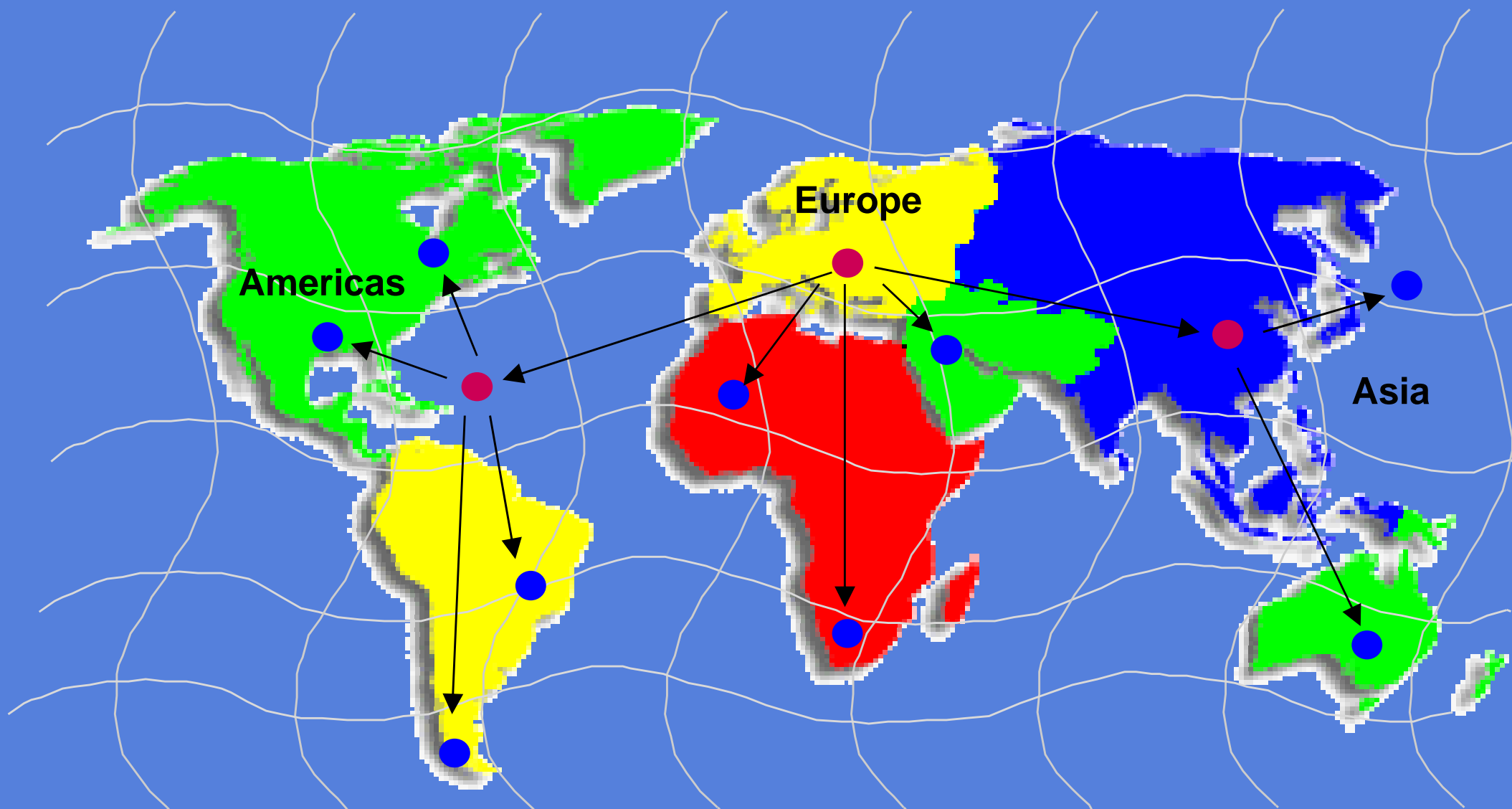
Built Networks of Competency

across the world...

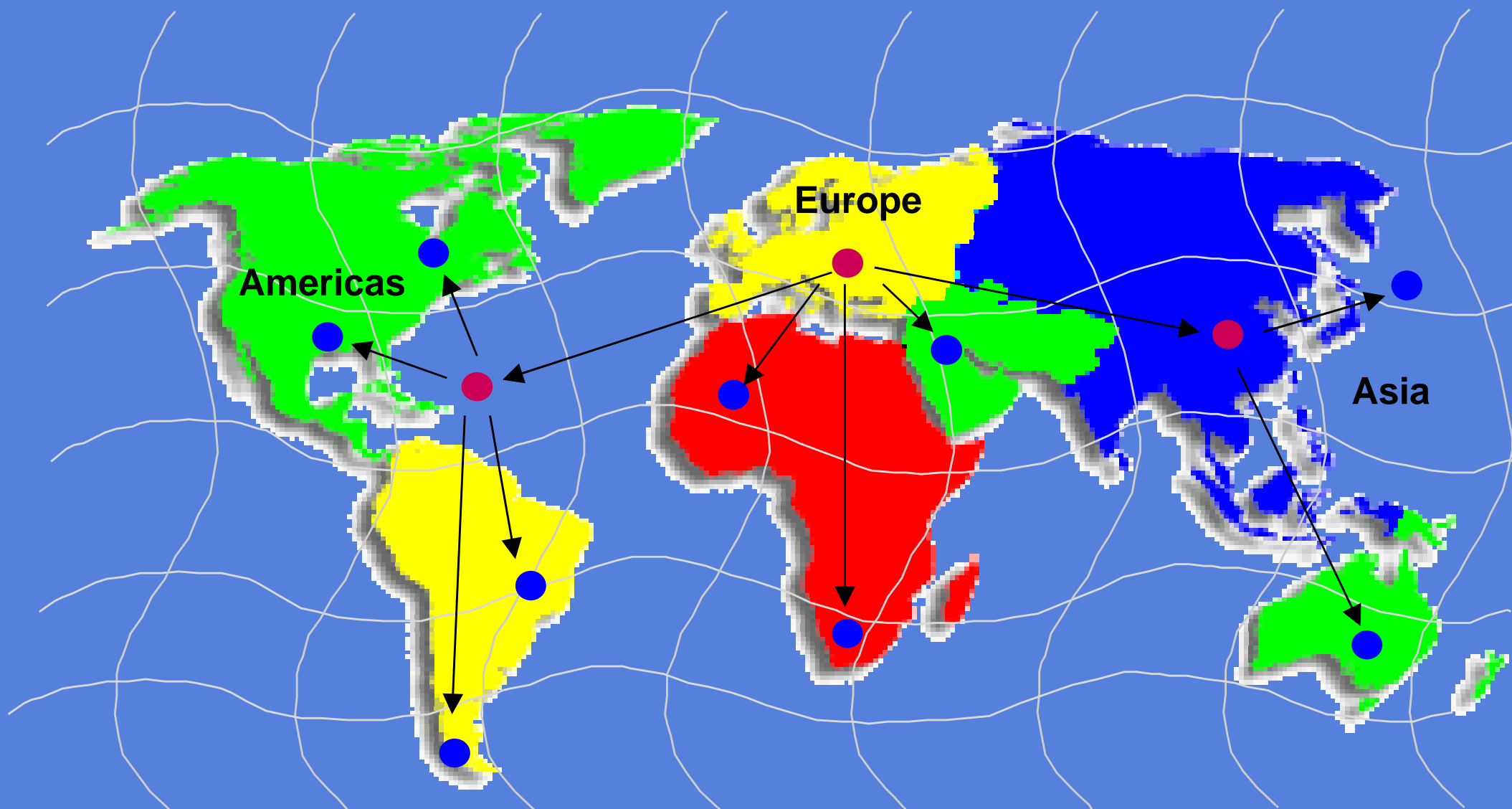








**Cloud Interoperability
Project (CIP)**



Cloud Connection

Information Bus



Cloud Connection

Information Bus

PLM
Crowd

OpenPLM
Crowd

CROWD

Cloud Connection

PLM
Cloud

Open PLM
Cloud

CLOUD

- Process Management

Process Management

Define Processes

- Funktional
- Dependencies
- Goals

Build Processes

- Crowdworker, Center, Islands
- Selforganized Teamwork

Support Processes

- Infrastructure (Internet)
- Common Flow
- Definition of Interfaces

Recognize Improvement Potential and act

**Do your
Homework**

Develop Personal

- Qualifikation
- Information
- Unternehmensculture

Create Framework

- Working time
- Compensation

Technology support

- Virtualization
- Automatization
- Chain Blocks

Workplace Management

„Work is what you do,
not where you go!“

Charles Handy,
London Business School

Change Management

**Somebody who will not change anything,
will lose even that,
what he want to keep instantly.**

**Gustav Heinemann
(1899-1976)**

- CIP Structure (Part II)
 - Classic Organization
 - Cloud Interoperability
 - Migration and Interoperability
 - CIP Architecture
 - Projects
 - Innovation

Classic Organization

**Executive Steering
Committee**

**Developer
Support**

Project Leader / Projektleiter

PLM aaS

SWaaS IaaS

Services

PLM APPLICATIONS

SOFTWARE

SERVICES

Environment Processes:

Virtualization

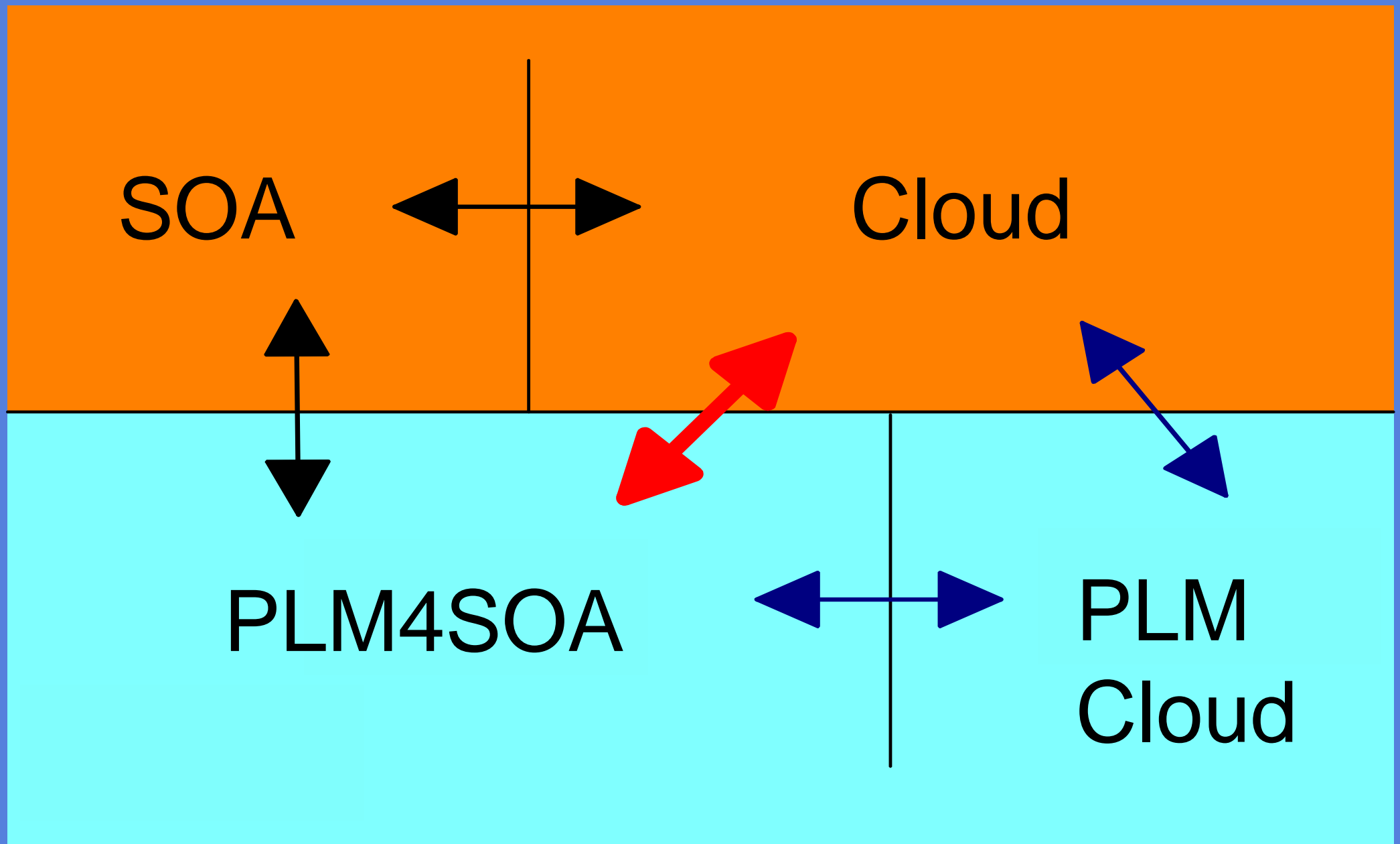
**Development of
Services Offering**

CARIT Processes:

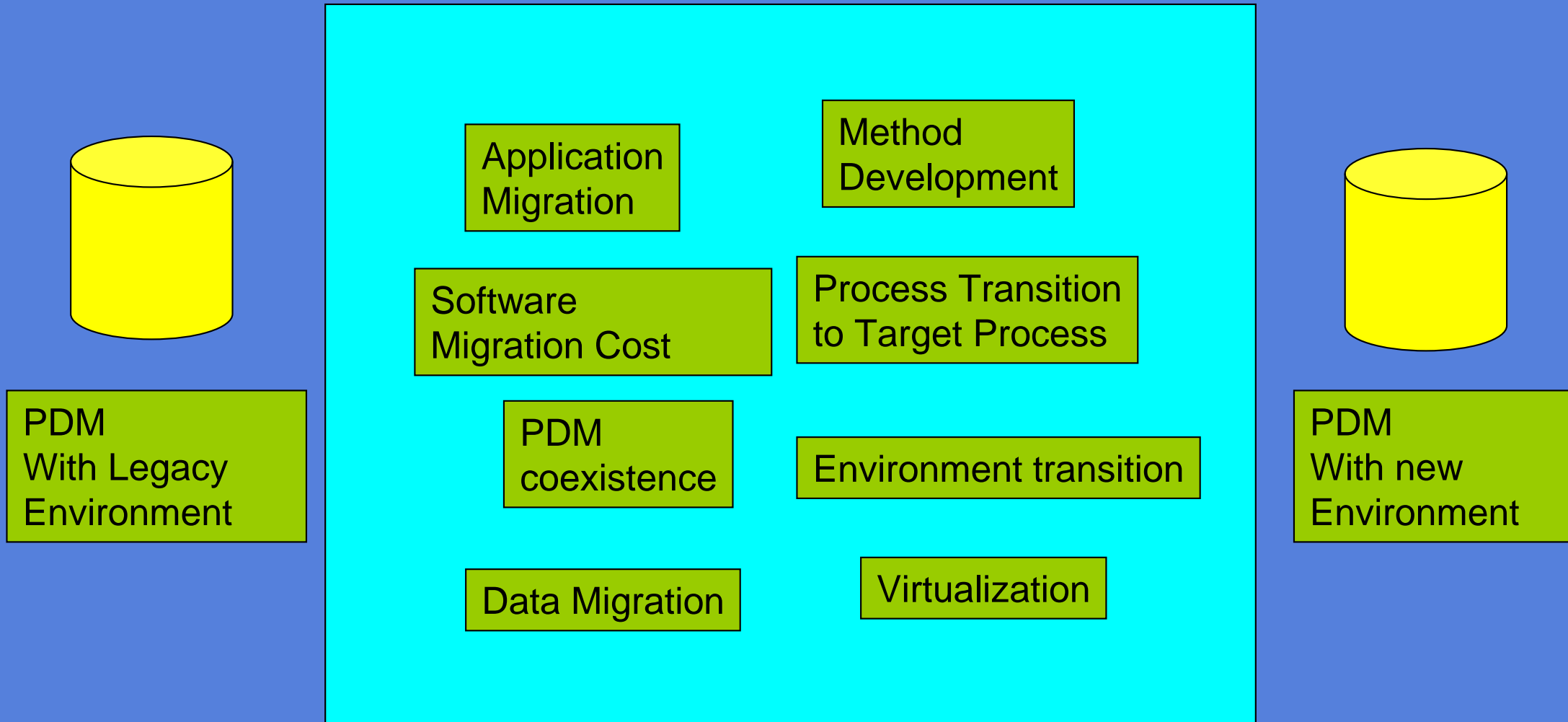
Service Mgmt

Other Processes:

Cloud Interoperability



Migration and Interoperability



CIP Architecture

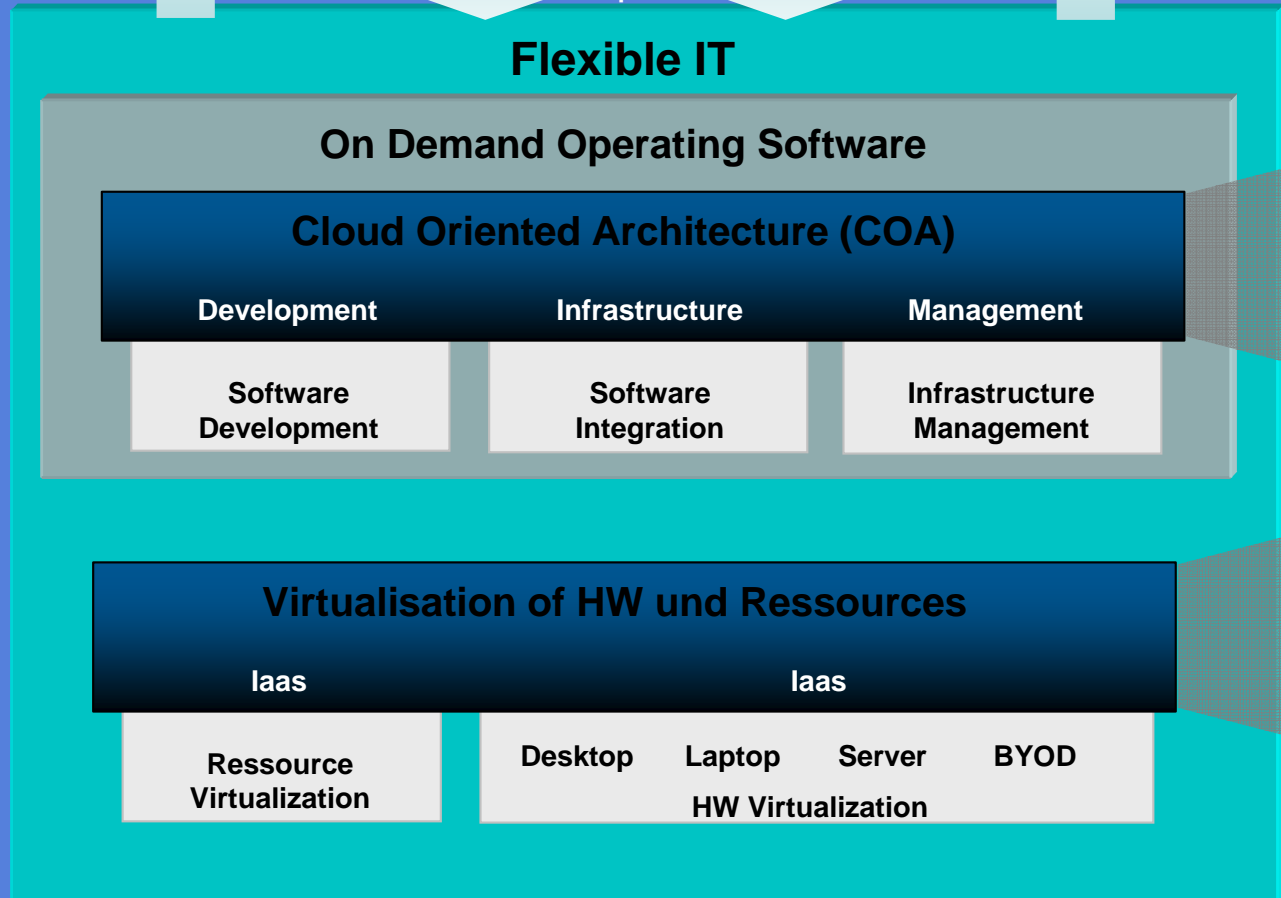
PLM aaS



Process Modeling

Requires

Flexible IT



Composable Services

HW Virtualization

SW aaS



IaaS

Projects

- Now we have a solution and what we need is a troubling customer and a problem for that

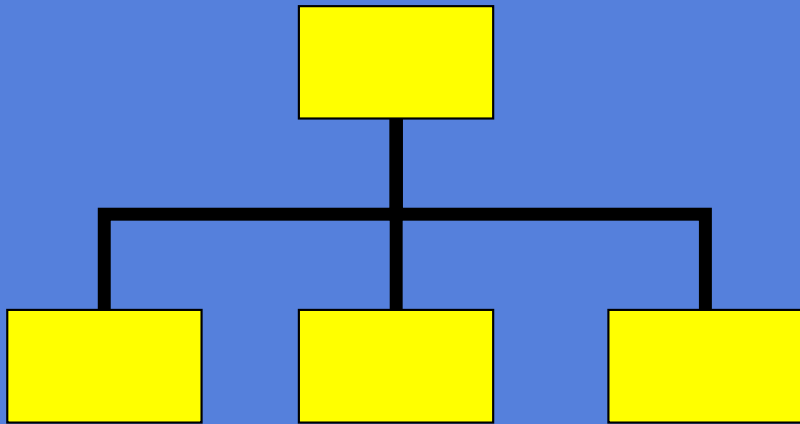
Successful project

- By the time the project is successful shareholders will automatically come and beg for being part of this project
- Then we are able to chose the best shareholder and select the shareholder we want and who brings the best benefits to the table

- Roadmap 2017 (Part III)
 - From Classic to Crowd
 - The long waves of Interoperability
 - CIP 2030++
 - Workarea

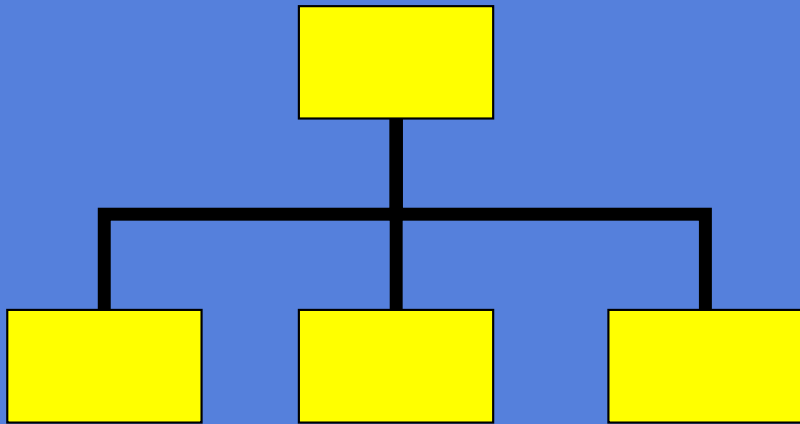
From classic CIPO Structure

- Hirarchical Company Structure

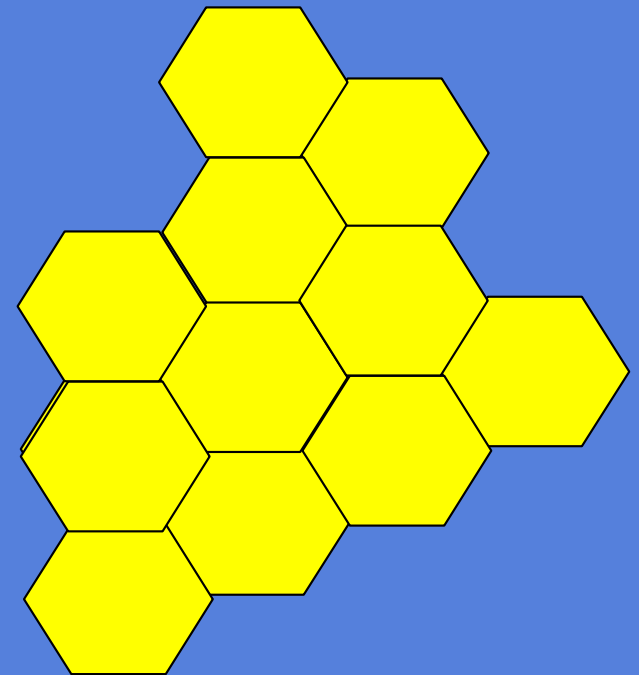


to CIP Crowd Structure

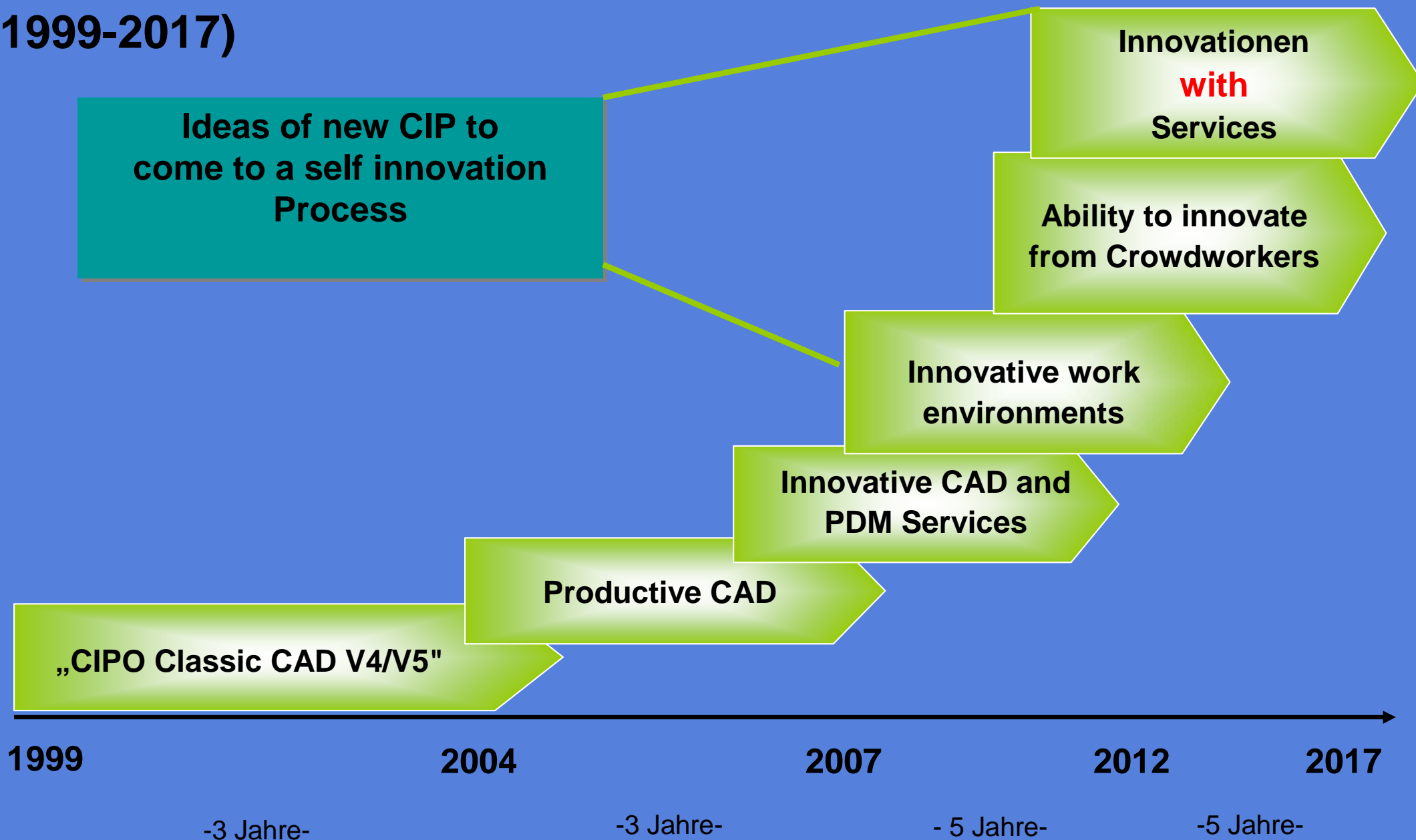
- Hirarchical Company Structure



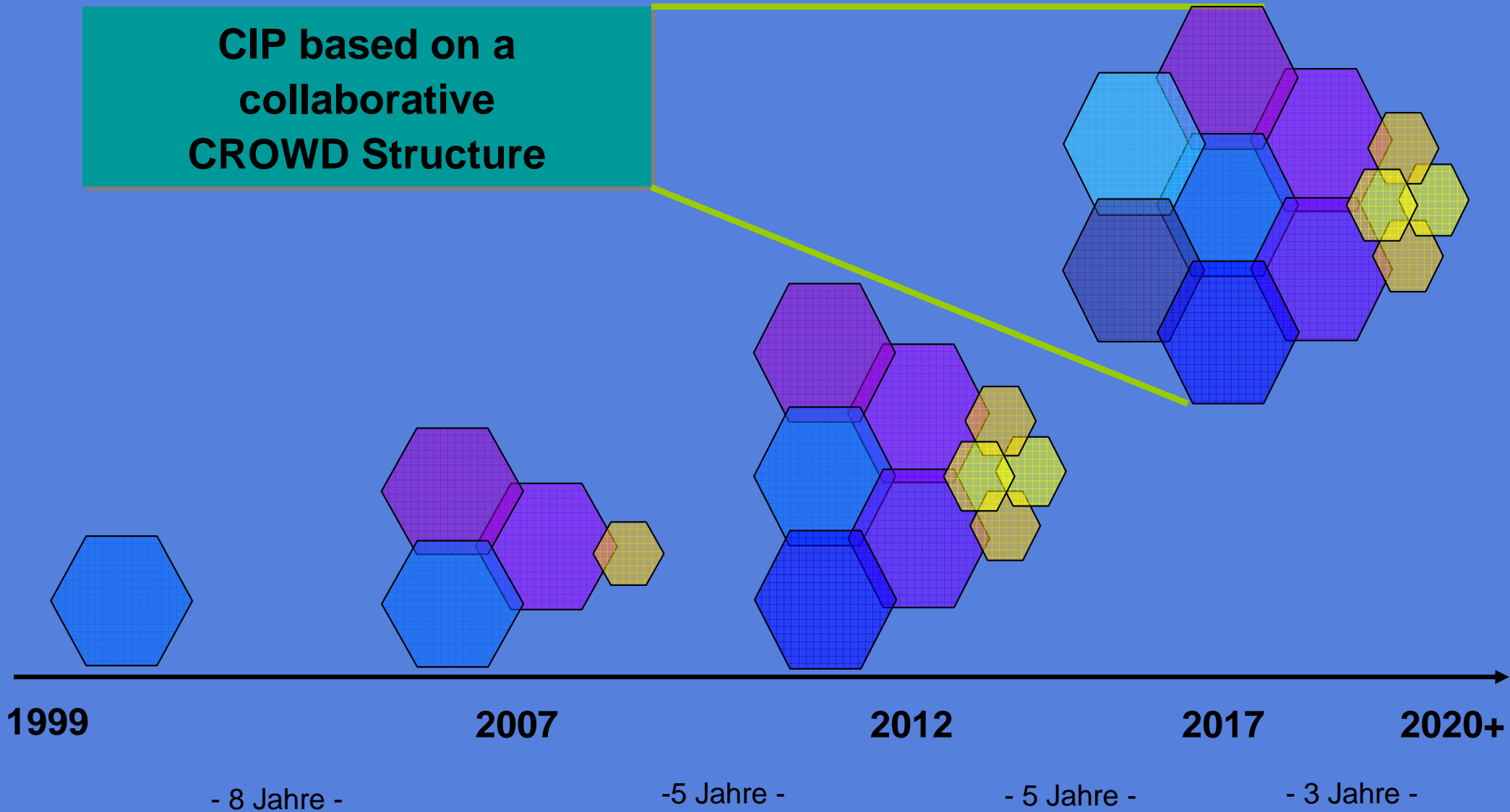
- Collaborative Crowd Structure



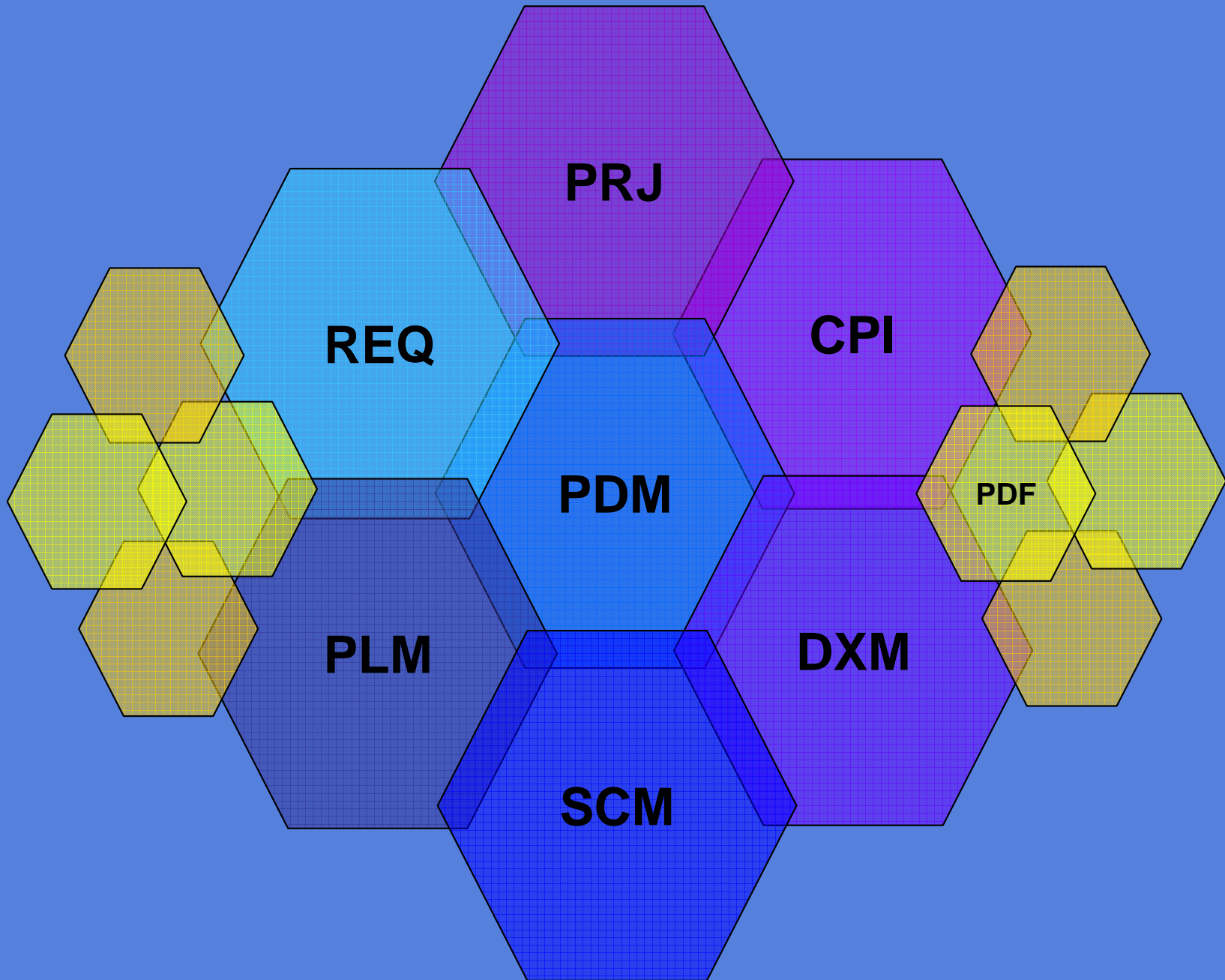
The long waves of interoperability (1999-2017)



**CIP based on a
collaborative
CROWD Structure**



CIP 2020++

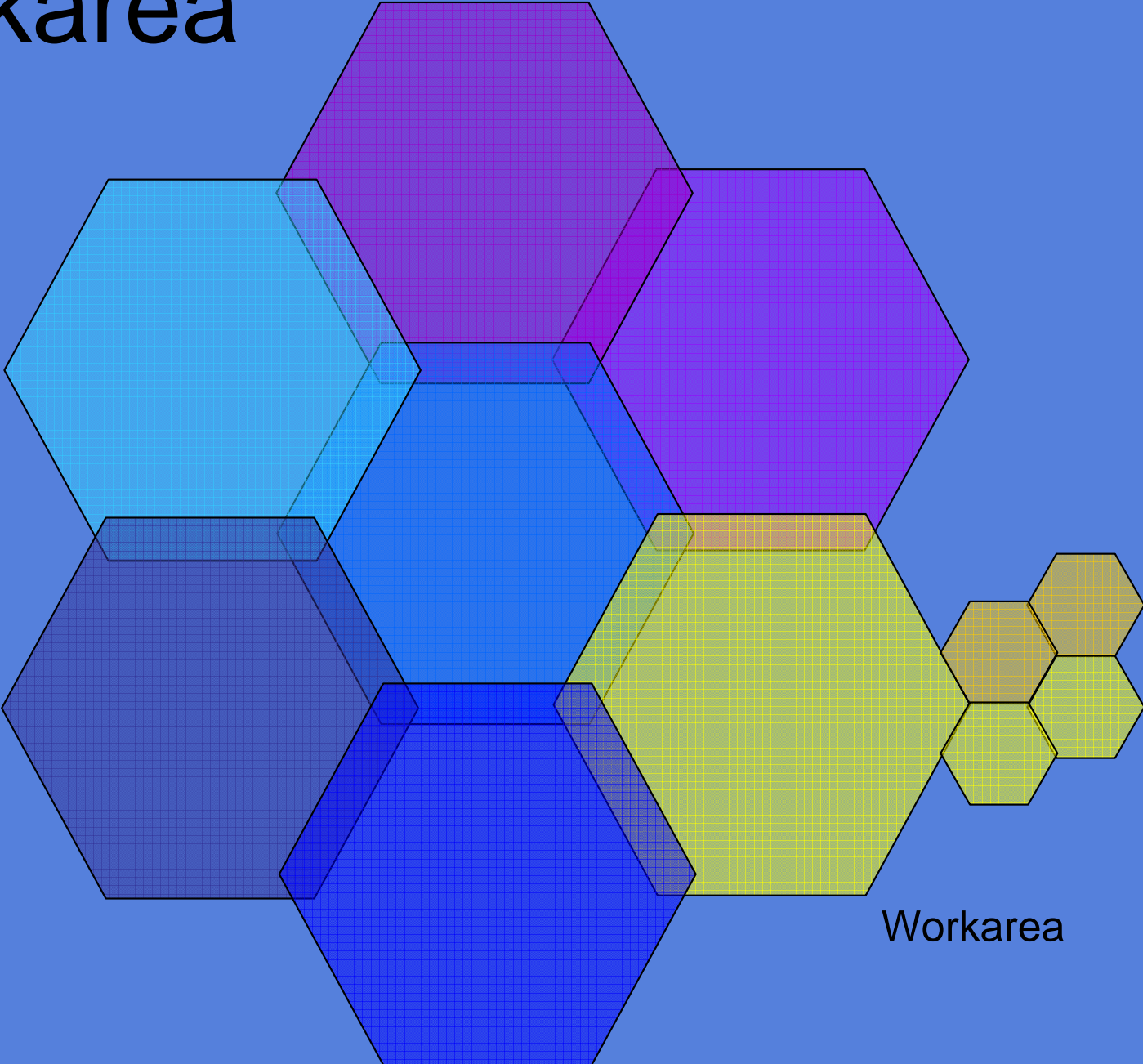


CIP Legend

- PDM Product Data Management
- SCM Supply Chain Management
- PLM Product Data Management
- REQ Requirements Management
- PRJ Project Management
- DXM Data Exchange Management
- CPI Continuous Process Improvement

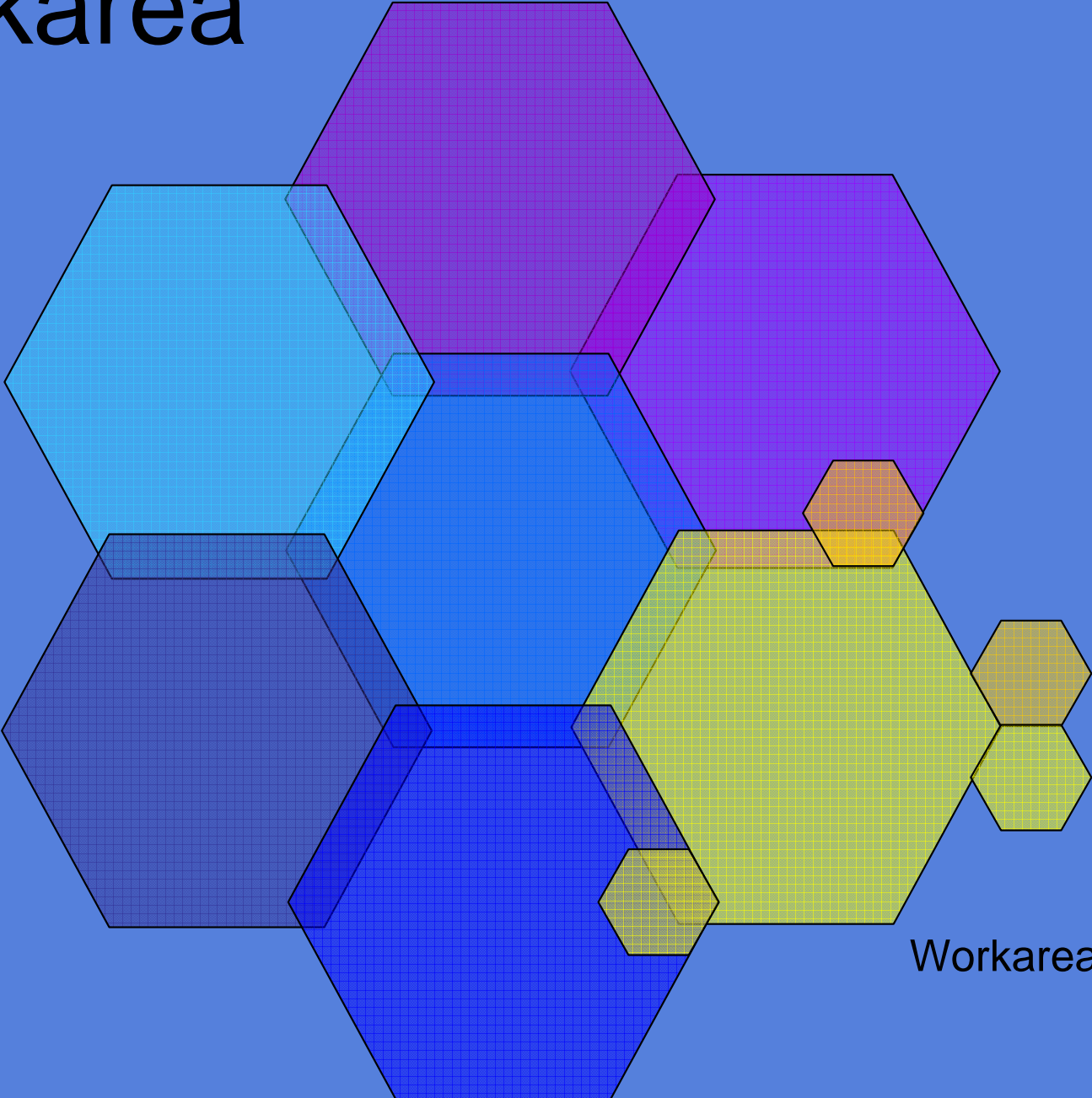
- Workarea

Workarea

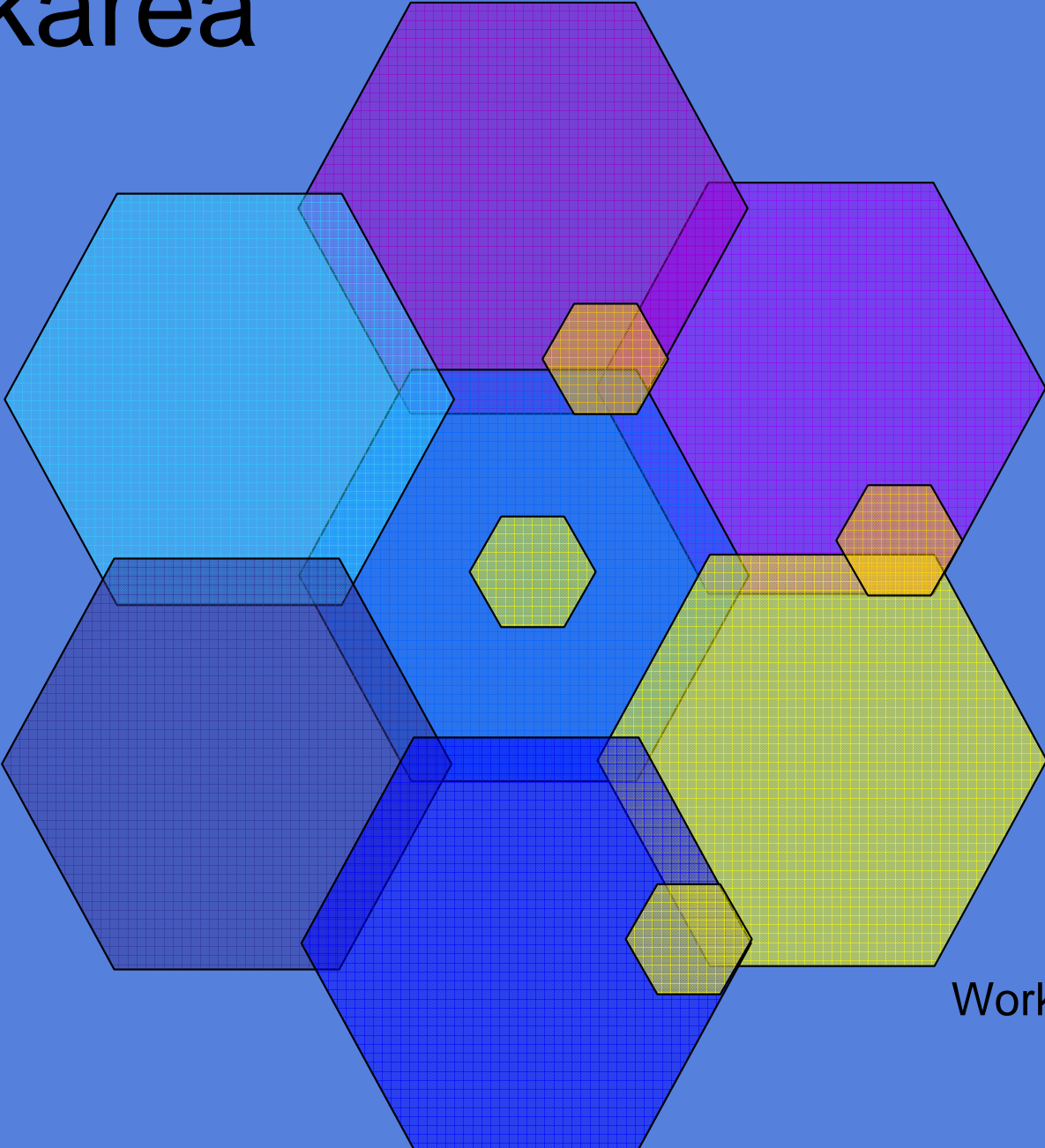


Workarea

Workarea



Workarea



Workarea

Workarea

- Workarea (Arbeitsräume) are single self defined areas in which the Crowdworker work on their tasks they can do best.
 - Workareas (Arbeitsräume) are defined thru interfaces between the workers
 - Workareas (Arbeitsräume) are defined thru mutual agreements between the workers
 - For the Workarea (Arbeitsräume) every single Crowdworker is self responsible

- Business

- Mission Impossible

- Business Case

- Acceptance of business Case

Mission Impossible

- **Your Mission:**
- Build up a global worldwide Cloud Interoperability Project and Network without been known by the shareholders and without shareholders taking money out of it.
 - Is this possible?
 - Who takes the mission?
- **Some more details of your task:**
 - a) Independant of work location and work office
 - b) Don't work on product details. Work on a generic approach and build the specific part with your company and your costumer

Business Case

- Don't wait for the business case of your management. Invest into the future
- Your management won't make a Business Case because they have no money at all for your problems of interoperability
- They only spend money for customers and shareholders

Act

- If you think you are the right person for the job, then bring your points to the table and do it.
- **IT is as simple as that in the cloud.**
- You do not need to wait for the management to be ready and your shareholder to spend money for what you have to pay with your profit

Bluepages for adults

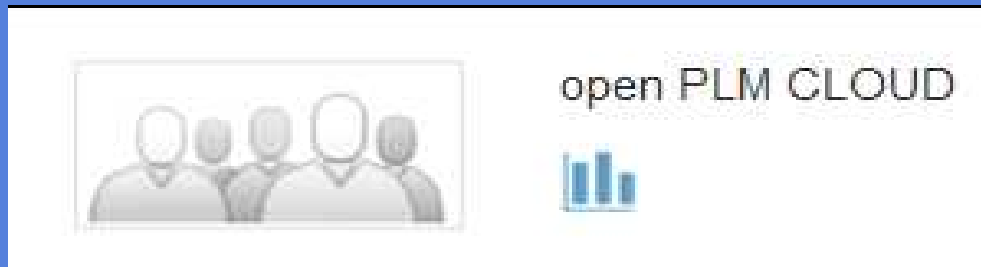
- XING
- LinkedIn




A screenshot of a LinkedIn profile card for Alexander Hiltl. On the left is a circular profile picture of a man in a suit. To the right of the picture, the name "Alexander Hiltl" is displayed in blue, followed by a blue "SIE" badge. Below the name, the title "Projektleiter" is shown in grey. Further down, the location "München und Umgebung, Deutschland" and industry "Automobil" are listed in grey. At the bottom, the text "Ähnliche" is followed by a person icon and the number "40".

Alexander Hiltl SIE
Projektleiter
München und Umgebung, Deutschland · Automobil
Ähnliche ·  40

- Group



A screenshot of a LinkedIn group card for "open PLM CLOUD". On the left is a square icon showing five stylized human figures in grey. To the right of the icon, the group name "open PLM CLOUD" is written in grey. Below the name is a small blue bar chart icon with three bars of increasing height.

 open PLM CLOUD


Links

- CIP Pilot Website

<http://axelanderqip.jimdo.com/>

- Cloud Connection

<http://cloud-connection.blogspot.de/>

- Cloud PLM Website

<http://axelanderplm.jimdo.com/>

- Business Website

<http://axelanderbus.jimdo.com/>

Conclusion



- Regardless of your job role, location or work status:
- Pick up your tasks and think where you can contribute to CIP
- Look for Crowd Funding and Crowd Staffing

AHIT Unternehmens Beratung



Connecting Clouds

The goal of **AHITUB** are excellent analytics of actual questions for cloud connection of companies

This Presentation was presented to you by
AHIT Unternehmens Beratung