

CATIA Teamcenter Interface

CMI Release 10.2

Release Notes

Copyright

© 2000, 2012 T-Systems International GmbH.
All rights reserved. Printed in Germany.

Contact

T-Systems International GmbH
Solution Center PLM
Fasanenweg 5
70771 Leinfelden-Echterdingen
Germany

<http://www.cmi-support.com>

☎ +49 (040) 5395 – 2020

✉ +49 (0391) 5801 – 25688

mail: cmi_support@t-systems.com

Manual History

Version	Date
10.2	October 2012

This edition obsoletes all previous editions.

Trademarks

CATIA is a registered trademark of Dassault Systèmes.
Metaphase is a registered trademark of Metaphase Technology, Inc.
Teamcenter Enterprise is a registered trademark of Siemens PLM Corporation.
Names of other products mentioned in this manual are used only for identification purpose and may be trademarks of their companies.

Preface

About this Guide

This guide provides general release information for the CATIA Teamcenter Interface.

Related Documents

The following manuals contain information about installation and administration of the CATIA Teamcenter Interface:

Manual Title	Release
<i>CATIA Teamcenter Interface Installation & Administration Guide</i>	10.2
<i>CATIA Teamcenter Customizing Guide</i>	10.2
<i>CATIA Teamcenter User's Guide</i>	10.2

Your Comments are Welcome

Your comments on our publications are welcome. Please write us at:

T-Systems International GmbH
Solution Center PLM
Fasanenweg 5
70771 Leinfelden-Echterdingen
Germany

mail: cmi_support@t-systems.com

Table of Contents

CHAPTER 1	1
PLATFORM SUPPORT	1
<i>Supported platforms</i>	1
<i>Supported Teamcenter Releases</i>	1
<i>Supported Catia V4 Releases</i>	1
<i>Supported Catia V5 Releases</i>	1
CHAPTER 2	3
FUNCTIONAL CHANGES.....	3
<i>Replace from Teamcenter</i>	3
Configuration	3
<i>Administrative lock for CMI Preferences</i>	3
<i>CATProduct Bounding Boxes</i>	5
Configuration	5
<i>CATIA V6 interoperability</i>	5
CHAPTER 3	6
GENERAL ENHANCEMENTS.....	6
<i>CATProcess Workbench</i>	6
CHAPTER 4	7
NEW CUSTOMIZING POINTS.....	7
<i>Changed customizing messages</i>	7
CHAPTER 5	9
DATA MODEL CHANGES	9
<i>Product Bounding Box</i>	9
CHAPTER 6	11
BUG FIXES	11
<i>Reconnect of representations that are BOM Parts</i>	11

CHAPTER 1

Platform Support

Supported platforms

HP-UX 11
Sun Solaris 8 (10¹)
IBM AIX 5.3 32 bit / 64 bit
SGI Irix 6.5
Windows XP 32 bit / 64 bit, Windows 7 64 bit
SuSE Enterprise 9.0² / SuSE Enterprise 10/11²³

Supported Teamcenter Releases

Teamcenter 5.1
Teamcenter 2007¹
Teamcenter 8.1 MP01³⁴⁵

Supported Catia V4 Releases

CATIA V4.2.0 – V4.2.4
CATIA V4.2.5¹

Supported Catia V5 Releases

CATIA V5R19
CATIA V5R20⁴
CATIA V5R21⁶
CATIA V5R22 (V5-6R2012)⁶

¹ Solaris 10 replaces Solaris 8

² TC server side only

³ SuSE Enterprise 10 / SuSE Enterprise 11 replaces SuSE Enterprise 9.0 for TC 8.1

⁴ Added Windows 64 Bit Server / Client

⁵ AIX6.1 replaces AIX 5.3

⁶ Only supports Win XP/7 and AIX 6.1

CHAPTER 2

Functional Changes

Replace from Teamcenter



This function allows to replace an instance in CATIA with a Part from Teamcenter. Select an instance in CATIA, then use *Replace from Teamcenter*. Choose a Part in Teamcenter and send it to CATIA via the CMI Workbench. The selected instance will be replaced by the Teamcenter Part, keeping the original instance name and positioning information.

Usage is similar to the existing function *Insert from Teamcenter*.

Using Synchronize you can update the assembly with the new relation, the old one will be deleted.

Configuration

By default, you cannot replace an instance of a Non-BOM Part, as no remove methodology for a Non-BOM Part is defined out of the box.

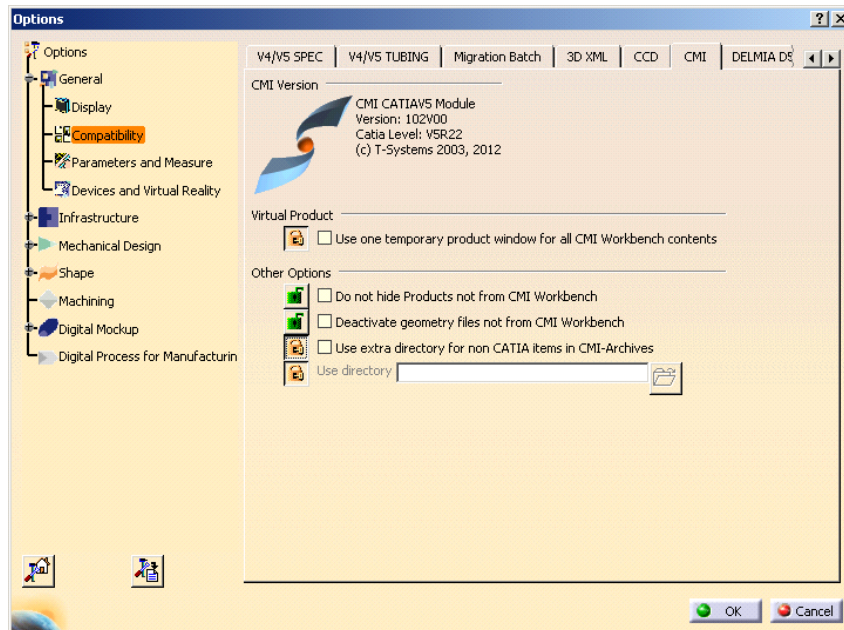
If you have implemented a remove method for CATParts or have configured CMI_REMOVE_GEOMETRY in Teamcenter,

Set CMI_REPLACE_ALLOW_NONBOM=ON in CATIA to allow replace of Non-BOM CATParts.

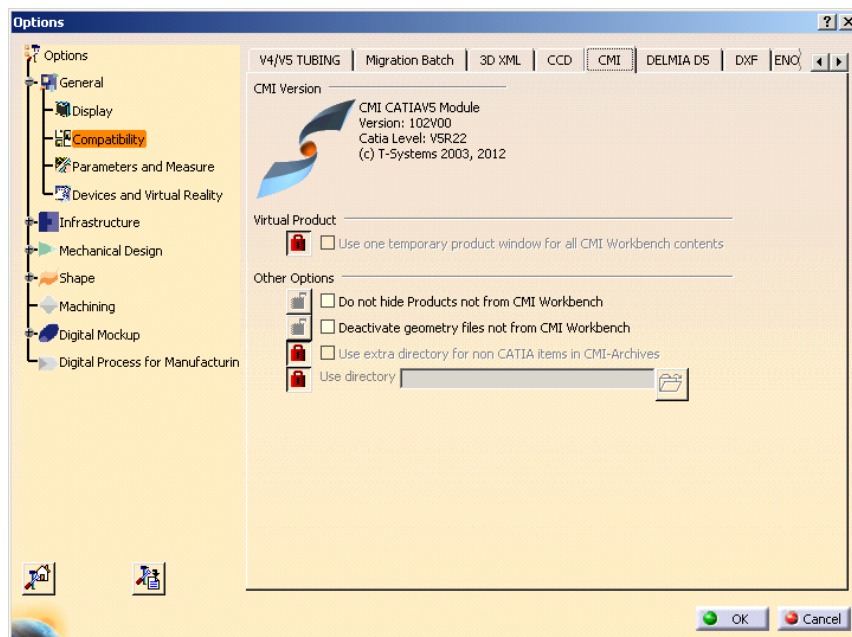
The new function can be removed from the CMI Toolbar by setting CMI_REMOVE_CMIREPLACEPDMSTRUCTURECMD=ON

Administrative lock for CMI Preferences

An administrator can now lock CMI Preferences similar to other CATIA preferences, using the CNEXT –admin interface:



Administrator view



User View

The locked preferences will have the administrators default values and cannot be changed by the users.

CATProduct Bounding Boxes

The CATIA Product class in Teamcenter has been enhanced with bounding box information. CATProduct bounding boxes will generally remain empty, except for a specific use case:

With CMI there are options where 3D geometry is not stored in Teamcenter, but rather included from the CATIA environment, eg. to include Standard Parts from catalogs.

As these parts are not represented in Teamcenter, they would not be part of the result of a DMU neighborhood search. This is addressed by the CATProduct bounding boxes, which are placeholders for exactly those Parts that are external to Teamcenter.

DMU neighborhood search will expand assemblies whose products have an eligible bounding box, in addition to those assemblies that contain eligible CATParts.

Configuration

In the Teamcenter configuration, set CMI_PRODUCT_BBOX "ON"; to include product bounding boxes in the DMU neighborhood search functionality.

In the CATIA environment set CMI_CALC_BBOX_FOR_IGNOREDCHILDREN=ON to enable calculation of the bounding box when a modified CATProduct is updated.

Set CMI_CALC_BBOX_FOR_IGNOREDCHILDREN=FORCE in a migration scenario for existing data. This will enable the save of bounding boxes whenever a CATProduct is writeable (to provide existing products with a bounding box, where the external parts were already present)

A bounding box will only be stored if CATParts or other geometry files are ignored due to a configurable embedded node behavior, and the new <BBox> tag is configured in the CMI configuration file.

Example:

```
<ConfigurableBehaviors>
  <ConfigurableBehavior UniqueID = "EmbeddedNode_STD_Ignore">
    <BehaviorType>EmbeddedNodeBehavior</BehaviorType>
    <PartNumberPrefix>STD_</PartNumberPrefix>
    <Behavior>IgnoreNode</Behavior>
    <BBox>true</BBox>
  </ConfigurableBehavior
</ConfigurableBehaviors>
```

CATIA V6 interoperability

Beginning with CATIA V5-6R2012 (R22) there is a level of compatibility between CATIA V5 and V6 data. File data exchange between CATIA V5 and CATIA V6 can be achieved with the Reconnect and Import/Export mapping functionality using the CATIA V6 FBDI batch facility. We provide a use case document that describes this scenario in detail.

CHAPTER 3

General Enhancements

CATProcess Workbench

The CATProcess Workbench does now support configurable node behaviors.

CHAPTER 4

New Customizing Points

Changed customizing messages

The method `x0CatPrd:x3SetCusAttrModInf` receives the product bounding box values `D3D_BEX1`, `D3D_BEY1`, `D3D_BEZ1`, `D3D_BEX2`, `D3D_BEY2`, `D3D_BEZ2`

In the `ModellInfo` named value set. These values are absent if the bounding box is empty.

CHAPTER 5

Data Model Changes

Product Bounding Box

The class x0CatPrd is extended with the bounding box attributes x0CatiaBndBoxMinX, x0CatiaBndBoxMinY,x0CatiaBndBoxMinZ, x0CatiaBndBoxMaxX,x0CatiaBndBoxMaxY,x0CatiaBndBoxMaxZ

These attributes are also displayed in the Get Item Info Dialog of CATIA Product File.

CHAPTER 6

Bug Fixes

Reconnect of representations that are BOM Parts

Reconnect now handles those representation files correctly that are stored as BOM Parts.

Representation files are those that are represented in CATIA by a component product node, like CGR or Generic Shape Representations. As these are embedded in their CATProduct they should not as a rule be stored as BOM Parts, but rather as non-BOM.

If you encounter any problems please contact us at cmi_support@t-systems.com